

STRUCTURAL CRACK REPAIR PROTOCOL

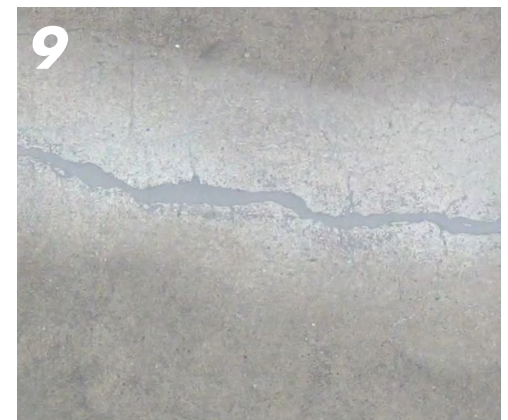
RAPID REFLOOR Fast Set, Low Viscosity Structural Concrete Repair Product



Best results are obtained by first grinding off or knocking down any excessive overfill with a cup grinder and medium grit finishing pad (e.g. *Gator Grit* or *Norton Rapid Strip*) which will not mar the concrete surface. Repair area should be completely free of dust, debris, dirt, oils and moisture prior to application of material.



Prepare cartridge for dispensing with static mixer and flow restrictor (if included) per kit instructions. Keep a waste container (disposable cup) handy to dispense **Rapid Refloor** liquid at start of application or if dispensing is delayed for more than 30 seconds (to avoid cured material in mixer tip).



Slightly overfill defect and monitor the installation for any seepage. If seepage into defect is detected, dispense additional material to restore flushness with surface. After **Rapid Refloor** cures into a hard solid (approximately 25 minutes) grind off any excess flush with surface using a cup grinder with medium grit pad or hand grinding stone.