

SPAL-PRO
RS 88

Semi-Rigid Polyurea Joint Filler

600 ML (300x300) Dual Cartridge Kit

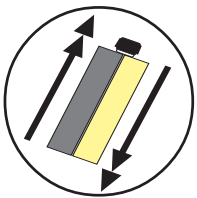
IMPORTANT INSTRUCTIONS
PLEASE READ BEFORE USE

CARTRIDGE SHOULD BE KEPT AT 70° F+ FOR BEST

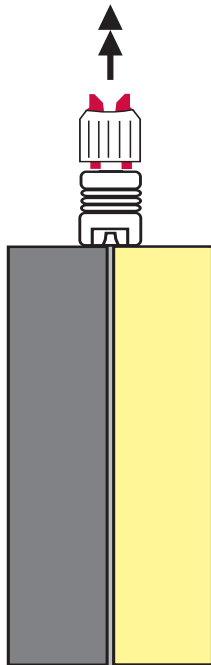
INSTRUCTIONS FOR USING CARTRIDGE UNIT

1

SHAKE WELL
BEFORE USE
(45 seconds+)



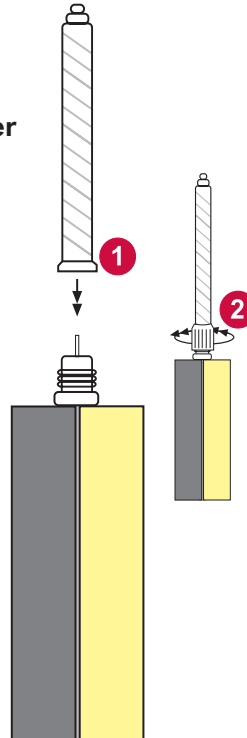
Unscrew lock
nut and pull
plug out



2

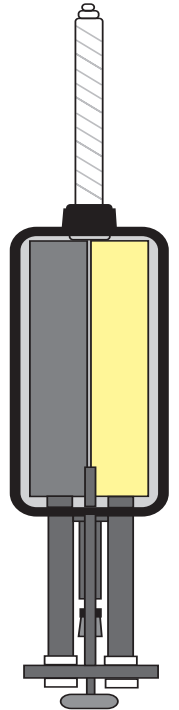
Place static mixer
onto neck of
cartridge.

Screw lock nut
over mixer and
secure tightly



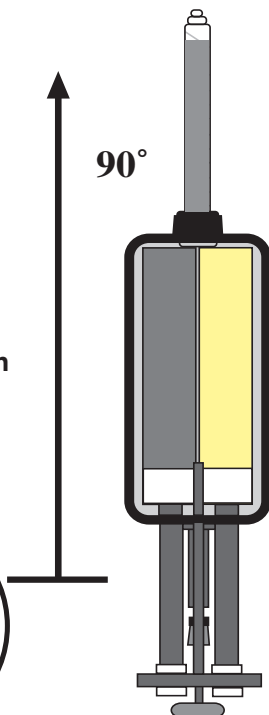
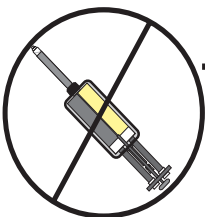
3

Pull back
pistons in gun
and securely
load
cartridge
in cradle



4

IMPORTANT!
Hold Gun
straight up at
a 90° angle
and slowly
pull trigger to
purge air from
unit. Drive
material to
top of mixer.



5

Tilt gun down and squeeze
first 3-4 shots of material
into a disposable cup, etc.
until color appears to be
consistent.

IMPORTANT!

Gun should remain tilted
down whenever dispensing
or when cartridge is being
used - do not tilt gun up
during use as partially
mixed material may run
back into cartridge!

