

IMPORTANT INFORMATION

- Designed for Installation at Full Saw-Cut Depth in Control Joints or 2" Minimum in Joints Exceeding 2" in Depth
- Pre-Mix A & B Components Prior to Combining

What is Edge-Pro XL?

"XL" is a two-part, pour grade epoxy made specifically to protect floor joint edges against breaking (spalling) caused by the hard wheels of industrial trucks. XL requires no primer under normal conditions, is 100% solids (will not shrink), and cures to a semi-rigid hardness. XL is installed full joint depth in saw cut joints or 2" minimum in construction joints.

Material Storage

Store XL in a cool area. Do not allow to freeze. XL has a minimum shelf life of 12 months. If material sits for over one month, turn cans upside down monthly to minimize settlement.

Checking Job Conditions

Floors should have a minimum cure of 30 days prior to joint filling. Since all concrete shrinks for months, and shrinkage results in the widening of joints, filling should always be delayed for as long as the schedule allows. If filling in refrigerated areas (coolers), the room should be stabilized at its final operating temperature for 5-7 days. XL should not be used in temperatures under 40° F. Joints should be dry, and work area should be well ventilated.

Tools and Equipment

XL can be dispensed via bulk caulking gun, power dispensing pumps, or manually poured. Other equipment needed includes, but is not limited to, proper safety gear (See MSDS), drill and mixing paddle (Jiffy or equal-no flat mortar paddles), plastic mixing pails, dry silica sand, solvent (MEK or denatured alcohol), wiper clothes, razor scraper and torch, etc.

Installation in Food Related Facilities

USDA prohibits the use of any chemicals in areas where existing food or food packaging can be contaminated. Contact Metzger/McGuire for further details if food products are present.

Stain Prevention

Proper XL installation requires that the joint be overfilled (crowned). XL overfill can cause staining along side joints. If surface staining is not acceptable, coat adjacent surfaces with "SPF" (Stain Preventing Film) manufactured by Metzger/McGuire. Apply SPF prior to joint cleaning procedures.

Joint Cleaning

XL must bond to clean, exposed concrete for the full intended filler depth. Joints must be free of saw laitance, dirt, debris, coatings, sealers, etc. The only effective means of proper joint cleaning is the use of a dry cut saw (preferably vacuum-equipped) with a diamond blade. The blade depth should extend to the intended filler depth. Run blade against each sidewall on separate passes. After cleaning joints with saw, vacuum any remaining dust/debris from joint.

Joint Preparation

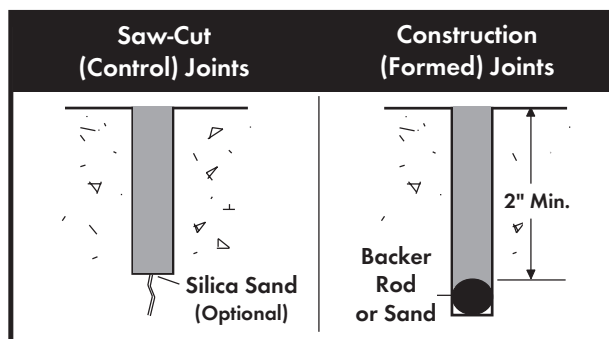
The installer may, at his option, choose to choke-off the bottom of joints to prevent filler waste. For saw cut joints, there are 3 acceptable choke-off options:

Apply a 1/4" deep (maximum) layer of dry, bagged silica sand to the base of the cut.

Mix dry, clean silica sand into already blended XL at a ratio of 1 quart sand to 1 gallon epoxy. This sand-modified XL must be limited to the base material pass only and held at least 1/2" below the surface.

As an alternative to sand basing, and if acceptable to project authorities, apply a 1/4" deep (maximum) bead of a Metzger/McGuire polyurea to the base of the joint (Spal-Pro 2000 or RS 88). Polyurea must be dispensed through a narrow tip that will place the filler at the bottom without leaving traces on sidewalls. **Note: DO NOT USE COMPRESSIBLE BACKER ROD IN SAW CUT JOINTS.**

For through-slab construction joints, the installer may use silica sand or backer rod IF it is held down at least 2" from the top. Contact Metzger/McGuire for information on special conditions (armored joints, etc.).

JOINT DESIGN DETAIL**Temperature Factors**

Like most epoxies, XL is affected by temperature. In warm or hot weather, XL will have a very short pot life. To extend the working time, place the unopened A (resin) can in ice water for 30 to 45 minutes before mixing. In cooler weather, XL will have a longer work time. To make it cure faster, apply heat or allow to sit in mass after mixing for several minutes.

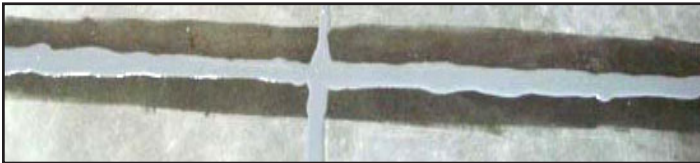
Revised 05/06

Mixing Edge-Pro XL (1:1 Ratio by Volume)

Read MSDS prior to opening containers and follow all safety measures, including working in an obstacle-free, well ventilated area. Always pre-mix BOTH A and B components separately prior to combining to re-disperse any settlement. Due to limited pot life (10-20 minutes at 70° F), mix no more than the packaged two-gallon unit at a time. Combine A + B and mix with drill and Jiffy-type mixer at a low speed for 2-3 minutes. Mix longer than 2-3 minutes if streaking is present, or if stirring by hand. **INSTALL PROMPTLY DUE TO SHORT POT LIFE.** Do not thin or dilute XL with solvent or other substances.

Installation

Install first pass of XL until it reaches within 1/2" of floor surface, and allow to sit for 30-60 minutes. This pause will allow entrapped air bubbles to rise and sinker areas to be discovered. Make second pass and overfill (crown). **DO NOT USE SILICA-MODIFIED XL FOR SECOND PASS.** Allow XL to cure into a full solid, usually 4-8 hours depending on temperature. Flush bulk guns with solvent regularly to prevent set-up in barrel or tip. If gun gets warm, dispense contained XL promptly.

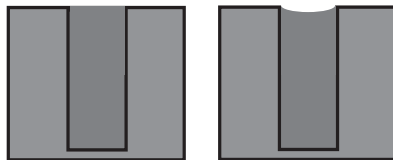


Caution On Chemical Cure

XL cures chemically through a reaction of parts A and B. During this chemical reaction the released fumes can be potentially harmful. In addition, the reaction causes a high heat buildup of as much as 180° F. Be extremely cautious during the cure period. Do not inhale or get epoxy on skin or in eyes; do not handle container of mixed epoxy without heat resistant gloves. See MSDS and safety information for additional information.

Finish Profile

To be effective as an edge-protector, XL's final profile should be flush with the floor surface. This is achieved by razoring-off the overfill crown after the XL has fully cured into a solid. This may require a second day of razoring. If XL is difficult to razor or ratchets while razoring, apply a small amount of heat (torch, heat gun, etc.) just prior to shaving. Always use a respirator mask when heating epoxy.



Low Spots

Low spots can occur due to sag or epoxy loss through cracks at bottom of joint. Do not try to apply a thin "cap bead" to cured XL. It will not bond. The low spots must be sawn out to a minimum depth of 1/2" and refilled with additional XL.

After the Installation

Clean all tools with solvent and remove spills on floor with solvent or by scraping. The floor, depending on temperature, can usually be opened to light traffic within 4-8 hours and heavy traffic in 8-12 hours. If the floor is to be acid-etched or coated, allow approximately 7 days. XL is unaffected by light muriatic acid and almost all coatings. A test coat is always recommended. Once cured, mechanical scrubbing or most cleaners do not affect XL. Stains left on the top edges from overfilling are difficult or impossible, to remove. Wire brushing with solvent (MEK or denatured alcohol) is somewhat successful.

Sand-Modification

Sand modification of XL (for sloping joints, etc.) is impractical if dispensing by pump. XL can be sand-modified if using manual dispense method, but will slow rate of cure. Contact Metzger/McGuire for additional information.

Filler Separation

Since slabs continue to shrink long after the filler installation, XL may separate adhesively or cohesively. This is not a failure of the XL. Refer to Metzger/McGuire's technical data on "Filler Separation" for complete explanation.

Filler Separation Correction

OPTION #1	OPTION #2
Use knife or narrow tool to loosen debris. Blow/vacuum clean. Fill (overfill) voids with Spal-Pro RS 88 Polyurea and allow to set into a solid. Razor off flush.	Saw cut out top 1/2" of epoxy. Blow/vacuum clean. Fill (overfill) voids with Spal-Pro RS 88 Polyurea or XL and allow to set into a solid. Razor off flush.

Color Changes

Certain lighting systems can emit UV rays that cause XL and other epoxies to change color. Charcoal grays typically turn yellow or a murky brown. This color change will not affect XL's performance but it can be aesthetically objectionable.

If color change takes place, verify that UV is the cause by running a sample of XL in an area not exposed to the lights. Removing and replacing discolored XL will merely result in a color change of the second installation. Color difference will generally become less noticeable with the passage of time and repeated floor scrubbing.

WARRANTY: Metzger/McGuire Co. solely and expressly warrants that its product shall be free from defects in material and workmanship for 12 months from the date of purchase. Unless authorized in writing by an officer of Metzger/McGuire, no other representations or statements made by Metzger/McGuire or its representatives, in writing or orally, shall alter this warranty. Metzger/McGuire makes no warranties, implied or otherwise, as to the merchantability or fitness for ordinary or particular purposes of its products and excludes the same. If any Metzger/McGuire product fails to conform with this warrant, Metzger/McGuire will replace the product at no cost to the purchaser. Purchaser's sole remedy in any case shall be limited to the purchase price or replacement cost of product and specifically excludes labor and the cost of labor, lost wages and opportunity costs, and all other possible incidental, consequential or special damages resulting from any claim of breach of warranty, breach of contract, negligence or any legal theory. Any warranty claim must be made within one (1) year from the date of material purchase. Metzger/McGuire does not authorize anyone on its behalf to make any written or oral statements which in any way alter the installation procedures or written installation instructions published in its product literature or on its packaging labels. Any installation of Metzger/McGuire products which fails to conform with such installation information or instructions shall void this warranty. Purchaser shall be solely responsible for determining the suitability of Metzger/McGuire's products for the purchaser's intended purpose.