

Wide Joint Spall Repair Using M/M's Armor-Hard



Existing Condition



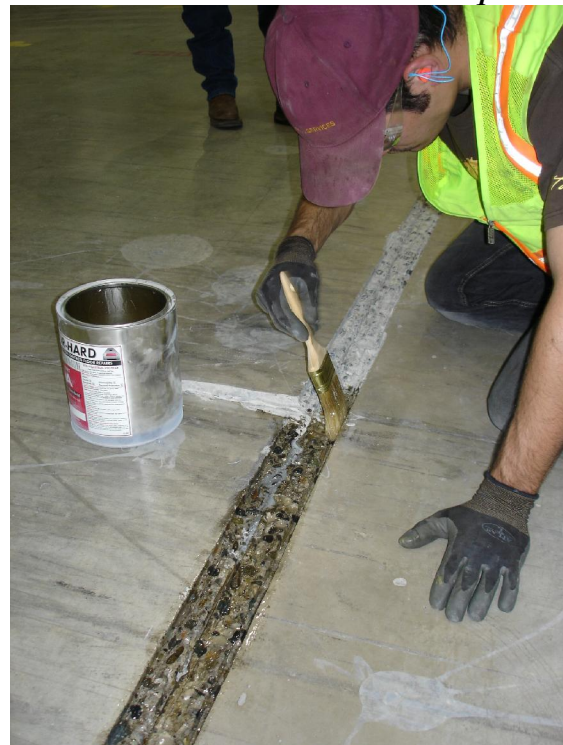
Saw Cut Lines Behind Spall



Remove Remaining Concrete



Prime Cleaned Joint with AH Liquid



Fill Joint with Armor-Hard Mortar



Trowel Mortar Flush with Floor



After Cure, Grind Flush with Surface



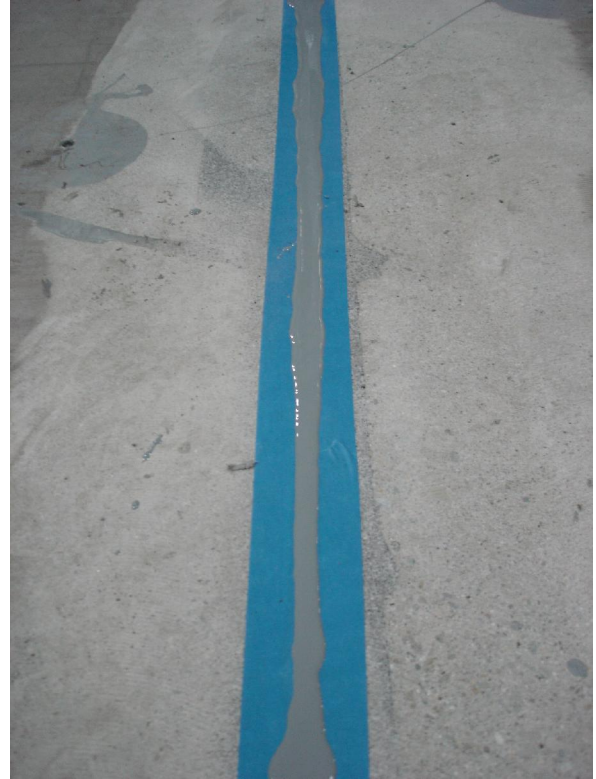
Snap Line Over Original Joint



Saw Cut New Joint



Fill New Joint with Spal-Pro 2000



Razor Off Cured Spal-Pro 2000 Overfill



Restored Joint Condition





For More Information on This and Other Repair Details Contact Us at:

800-223-6680

www.metzgermcguire.com

P.O. Box 2217 Concord, NH 03302